

September 2005

September 2005

DON'T FORGET WE WILL BE CLOSED 8-31 TO 9-7

Hello All You Wonderful People,

Okay, this is going to be a two (2)-page newsletter. I can send six (6) pages by mail for one stamp. With three pages of Winter Holiday Transfers, address page & order blank, Application & Winter Workshop Registration -- - that leaves me one page, front & back.

Next month will be Halloween and Thanksgiving transfers. I need all the ideas I can get.

I will, also, be putting in a section on the fairs that have been held this year, hopefully with pictures of some of the booths. So you all get me pictures and send me a write-up on your fairs and how they went.

Monthly Paint

The new monthly paint, 432 = Pumpkin. This is the perfect paint for this time of year. If you have Fall Harvest, this will shade with it really well. It also goes with all the reds and yellows and oranges. I think you will all like it. John did a really good job, as usual.

Monthly Special

The monthly special for September is "Add-on Kit #1". This kit is the 10 newest paints that are not in the Super Deluxe Kit, 113-120-134-143-147-148-151-154-174 + a mini toter. Retail=\$30.95 Sale=\$25.00

We now have ten more paints in the regular line than will fit in the Carrier – so you need to put them in a mini toter. The mini toter will sit in the bottom of your Carrier and you can close the Carrier and carry or store it. Actually two mini toters will fit in the bottom of your Carrier – so I can get the line all the way up to 78 paints before I have to come up with a second 'Carrier' kit.

September Workshops

September 15 – 11:00 AM – Lansing Workshop – Ponderosa on Cedar St.

7:00 PM – Manchester at the Home Facility

September 16 – Noon – Holly Workshop – call for directions

September 17 – 2:00 PM – Jackson area Workshop – call for directions

September 19 – 5:30 PM – Temperance Workshop – call for directions

See you at the meetings, or talk to you later.

Transfers



T4610-Woodpecker



T4623-On The Farm – Cow



T4624-On The Farm – Goat



T4625-On The Farm-Goose



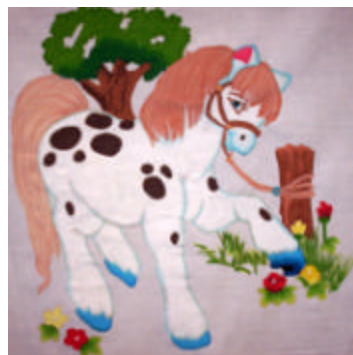
T4626-On The Farm – Hen



T4627-On The Farm-Lamb



T4628-On The Farm – Pig



T4629-On The Farm - Pony



T4630-On The Farm-Rooster

Winter Workshop 2005

November 5, 2005

Where: At the Ginger's Cameo facility in Manchester, MI

Time: Classes start at 9:00 AM (Continental Breakfast – 8:00 AM)

Door prize drawings on the hour

Registration: \$25.00 (includes some supplies)

Bring: A dish to pass (at the last Winter Workshop people decided that was the safest thing to do – since I don't cook.)

Ideas and painted items to share.

A complete set of paints – Fiber Blenders – Scissors

Classes: We will be working on the new Christmas Tree Skirt. Learning how to layout transfers and painting.

I'm not sure what else we will be working on – but it will be a **full** day. I will put out a schedule closer to the workshop.

Registration Form

NAME: _____

ADDRESS: _____

PHONE NUMBER: _____

EMAIL ADDRESS: _____

Guests: _____

PAYMENT: Check___ Mastercard___ Visa___ Discover___ Paypal___