

March 2006
March 2006

G

i

n

g

e

r

,

s

c

a

m

e

o

Hello All You Wonderful People,

I have been using my time trying to get this class piece together to send out with the newsletter. So the newsletter is late, again. I was going to get everything finished yesterday – but apparently we fried a squirrel at the transformer by our house. I called in that we had no electricity and it took a while for them to figure out where the problem was. It was the transformer right outside our house. For some reason we have our very own transformer. The man said he didn't know why the transformer didn't blow up. That would have been exciting!!! I'm glad it didn't. We haven't figured out how the squirrel managed to do that. I hope the rest of the squirrels are smarter.

I have been using my time trying to get this class piece together to send out with the newsletter. It has taken a lot longer than I expected it to. It's not that it took so long to paint... it took a long time to figure out how to write it down so maybe you could understand it. I realize that a lot of you are out there with no one close to teach you. I thought I would try to set something up so you could try new things on your own. Please, make sure you let me know how this works out. If it works well, I will try to come up with some more of them for you. If it doesn't work well – let me know how I can do it better. I have to rely on you to tell me what to do, so please, do your part and give me some feedback.

As you will notice – the amount of transfers being put out each month has slowed down some. I have been using the time to get the Quilt Block Club pieces done first – then working on new and old transfers – to get them out in the newsletter so you will eventually have everything in color. Soon I hope.

The feather transfer-T4675 (old number T4232) was always something that I figured was good for teaching. There is a couple of ways for you to do it.

You can do it as a silhouette or just an outline on the feather transfer. Good on the back of a western shirt.

You can do it by outline and fill-in. Maybe you could put it on the yoke of a shirt or down the sleeves.

You can cut off the outside edges of the feathers and use it to feather stroke or use a brush. If you cut off the ends of the feathers, you want to feather stroke out from the center. Remember that a feather stroke is just flipping you paint tip. Place your paint tip down on the material solidly and then flip your wrist to make the stroke. Halleen says to look at it like an airplane taking off. It's down solid on the ground – then rises into the air. You can practice this on a piece of paper with a pencil or pen. Some people can flip away from them best and others can flip toward them best. You have to figure out which way is best for you. The only way you get better at this is to keep practicing it. Make yourself do this stroke as much as you

can. I have to admit that it makes your wrist tired when you first start using it, but your wrist muscles adapt and get stronger so you can do more and more at a time. After you do the feather strokes either with the tip or with a brush, then you can put a solid stroke down the center to finish the feather. I did this all over a shirt to show different color combinations. My customers thought it looked good.

The new T4673-Paint Dots is for you to paint in with **the paints that you own**. This lets you see what paints you don't have and how many more paints I will be putting in the Line. Be sure to only paint in the ones that you own, that way you can keep track of what you need. Just put this on a piece of material and keep it with your paints. This will also give you the ability to see what colors you might want to use to change the transfers to if you don't like to do them the way they're charted. You can use the bottom circles to put any old monthly paints (or old colors that you have but that have been changed now).

Don't put the following ones down there since they are being put in the Line in May. No need to waste your dots. Ones coming in May – Country Pink (new), Spring Green (will match), Blue Spruce (will match), Yellow Ochre (will match), Olive and a pumpkin color that is not figured out yet, but will be close to Fall Harvest. We're trying to get a decent line of earth tones. The Country Pink will go with the Country Rose. You can't get them until after May 1st. They will be ready to go for the Spring Workshop. Don't try to order them ahead since they are not mixed yet.

The "Home" (T4666) and the "Traveling" (T4667) are charted different in the transfers that you order regularly. When you order them in the "Scene Class Pak I" they are charted in solid so you can get a totally different look.



Halleen's
Painting



Class
Painting

As you can see – Halleen's painting is **outline and pull in** and the class picture is completely **filled in**. Also, notice that Halleen did her's on a shirt so it is longer and can be put on so the People are going Home. The class is on a wide piece so the People are going away from Home at the side. (On the class piece you could put the Home transfer a little lower to give it more of a perspective.) I tried to make it look like the People were riding away on a hill to the side and above the Homes.

Paint 122-Dark Green has been darkened. I have a few of the old ones left for those that have a project started with it. I have had suggestions that the two greens, 121 and 122, were not different enough, the values were too close. Having had the same thought myself, I asked Mysti what she thought. She thought the same thing. So what you get from now on will be in a darker value.

Animal Quilt Blocks**Flower Face Quilt Blocks****Unicorn Quilt Blocks**

A Q01



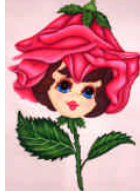
F F Q01



U Q01



A Q02



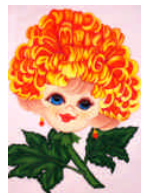
F F Q02



U Q02



A Q03



F F Q03



U Q03

If you do these up and show them, people will want to do them. I always find that I don't have to like something for someone else to like it. So paint each one of them and show them to your people.

Scene Class Pak I – \$10.00

- (2) Transfers – T4666 & T4667
- (1) Wallhanging (approx. 30"x20") – P324
- (1) Supply List
- (1) Step-by-step Directions with pictures

Monthly Special
Monthly Special

For the month of March, 2006 you can get the above Scene Class Pak I for \$9.00. This will give you a chance to try something new.

You can also just use the two (2) transfers and the Wallhanging separately for something else.

Maybe you would like the Wallhanging to try putting some other transfers together and making them into a scene.

You can order this special under MSMAR06. That's monthly special for March of 2006.

Transfers



T4155-Hang In There



T4166-Having A Crisis



T4516-Totem/Feathers



T4554-Variety Designs



T4529-Shaded Roses



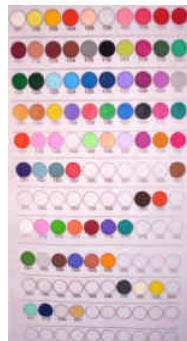
T4666 - Home



T4667-Traveling



T4672-The Luck O' The Irish



T4673-Paint Dots



T4674-Spring Is Coming



T4675-Feathers

Here's some idea of what happens at a workshop. This is the Winter Workshop on the first Saturday of November in 2005. We had food, fun and lots of learning from each other and the teacher of the moment.

Halleen was one of the teachers. She taught the Seven Santas Christmas Tree Skirt class. And of course everyone learned lots from her by asking questions and seeing what she was doing with other people.

Folks brought things to show and share with the rest of us.

All in all it was a great day.



Spring Workshop

May 7, 2006

Where: At the Ginger's Cameo facility in Manchester, MI

Time: Classes start at 9:00 AM (Continental Breakfast – 8:00 AM)
Door prize drawings on the hour

Registration: \$25.00 (includes some supplies)

Bring: A dish to pass (at the Winter Workshop people decided that was the safest thing to do – since I don't cook.)
Ideas and painted items to share.
A complete set of paints – Fiber Blenders – Scissors

Registration Form

NAME: _____
ADDRESS: _____
PHONE NUMBER: _____
EMAIL ADDRESS: _____
PAYMENT: Check___ Mastercard___ Visa___ Discover___ Paypal___

Ginger's Cameo – 4879 Sylvan Rd. – Manchester, MI 48158
Phone: 734-428-1344 emails: ginger@gingerscameo.com